

TITOLO DELLA SERIE E SCALA TITLE OF SERIES AND SCALE	SIGLA SERIES	NOME DELLA CARTA E/O NUMERO CHART NAME AND/OR NUMBER	DATA DI PUBBLICAZIONE DATE OF PUBLICATION
CARTA DI AVVICINAMENTO STRUMENTALE - ICAO (IAC) Scala 1:250.000 INSTRUMENT APPROACH CHART - ICAO (IAC) Scale 1:250.000 CARTA DI AVVICINAMENTO A VISTA - ICAO (VAC) Scala 1:250.000 VISUAL APPROACH CHART – ICAO (VAC) Scale 1:250.000		ALBENGA Vedi/See AD2	
		ALGHERO/Fertilia Vedi/See AD2	
	IAC	ANCONA/Falconara ILS-Z RWY22 219/11 ILS-Y RWY 22 220/11 L+DME-P RWY 22 221/8 L+DME-S RWY 22 222/9 L RWY 22 223/8	13 APR 2006 13 APR 2006 10 JUN 2004 10 JUN 2004 10 JUN 2004
	VAC	Visual Approach 703/2	8 OCT 1998
	IAC	BARI/Palese VOR X RWY 25 213/7 VOR Z RWY 25 308/2 VOR Y RWY 07 214/6 ILS-Z RWY 07 215/10 ILS-Y RWY 07 216/7 ILS-X RWY 07 217/7 VOR or LLZ Z RWY 07 305/4 VOR or LLZ Y RWY 07 306/3 LO RWY 07 307/3 VOR Z RWY 07 333/1 LO Z RWY 25 470 LO Y RWY 25 471 VOR W RWY 07 472/1	7 JUN 2007 7 JUN 2007 7 JUN 2007 7 JUN 2007 7 JUN 2007 7 JUN 2007 7 JUN 2007 7 JUN 2007 7 JUN 2007 7 JUN 2007 7 JUN 2007 7 JUN 2007 7 JUN 2007 7 JUN 2007 21 JUN 2007
	VAC	Visual Approach 705/8	7 JUN 2007
	IAC	BERGAMO/Orio al Serio ILS-P RWY 28 166/11 ILS-S RWY 28 167/10 ILS-T RWY 28 168/11 VOR+DME-P RWY 28 169/8 VOR+DME-S RWY 28 170/8	14 SEP 2006 14 SEP 2006 14 SEP 2006 25 NOV 2004 25 NOV 2004
	VAC	Visual Approach 707/5	24 NOV 2005
	IAC	BOLOGNA/B. Panigale NDB RWY 12 031/6 ILS-P RWY 12 039/10 ILS-T RWY 12 045/19 ILS-S RWY 12 046/11 VOR+DME RWY 12 061/8 LLZ+DME (BOA) RWY 12 378	5 AUG 2004 5 AUG 2004 5 AUG 2004 5 AUG 2004 5 AUG 2004 5 AUG 2004
	VAC	Visual Approach 709/9	27 APR 2006
	BOLZANO Vedi/See AD2		
IAC	BRESCIA/MONTICHIARI ILS RWY 32 288/7 VOR+DME-P RWY 32 290/5	15 MAR 2007 1 FEB 2007	

ICAO - INSTRUMENT APPROACH CHART

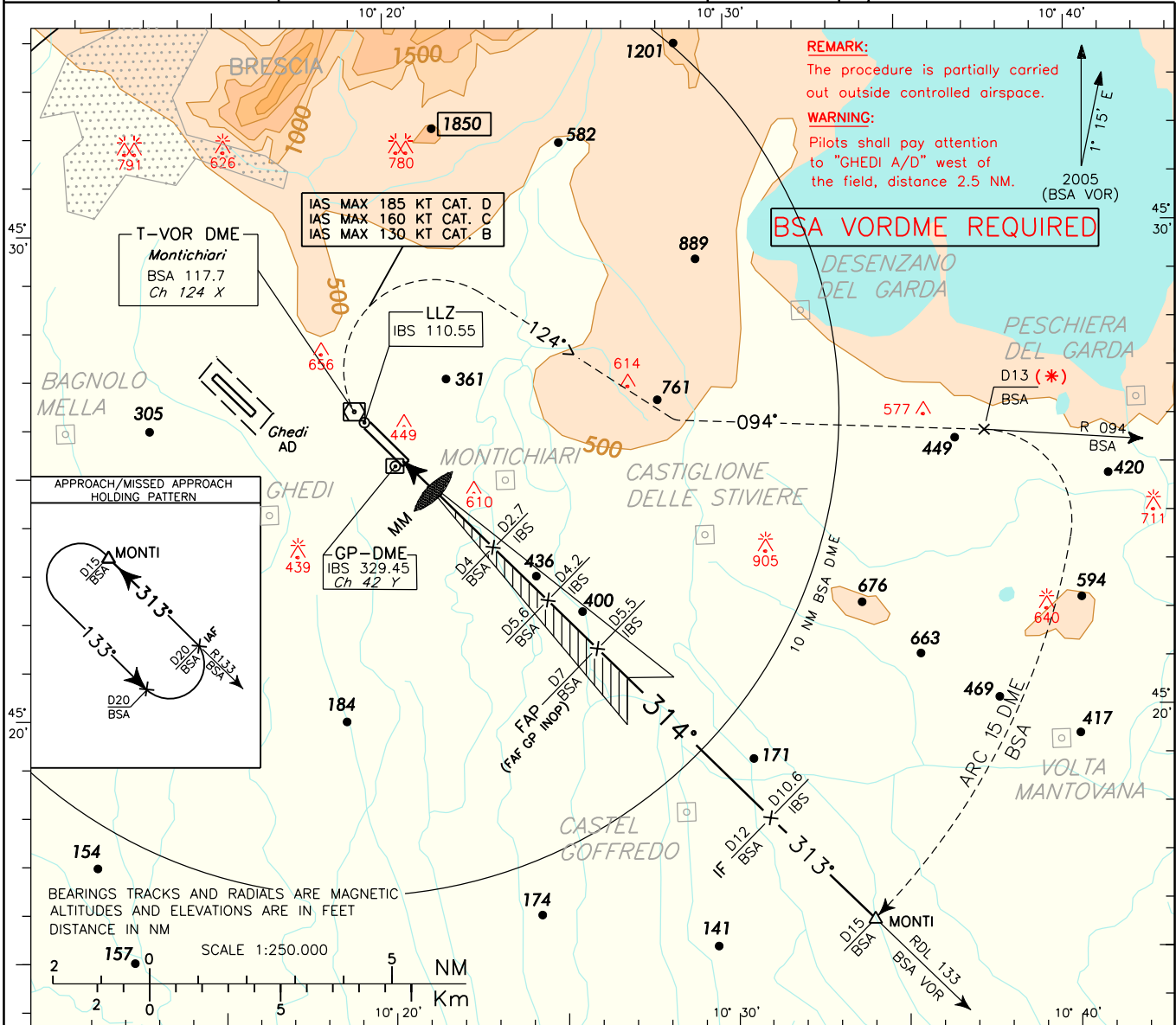
(*) WARNING: In case of ATC necessities perform climbing with MNM climb gradient 250 FT/NM (4.4%) to cross point R 094/13 NM BSA at 5000 FT or above.

APP	Garda Approach	TWR	Montichiari Tower
	135.90 124.25		119.40
	118.55		

AD ELEV	L I P O
356	

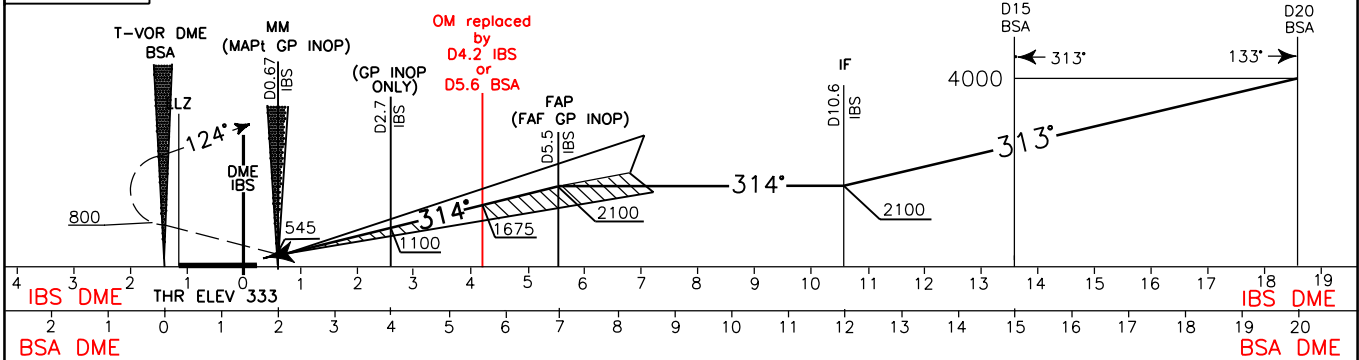
BRESCIA/MONTICHIARI
 CAT. I II & III
 ILS RWY 32

DOC. 8168 ED.4-1993 AM.13
 CHANGE: Revised chart due to "IBS" DME installation.



TRANSITION ALT 6000 MISSED APPROACH: Proceed on TR 314° climbing to 4000 Ft. At 800 Ft turn right on TR 124° to join R 094 BSA. At 13 NM BSA DME turn right to follow 15 DME BSA arc to MONTI holding pattern.

RDH 17 M
GP 3'
GP INOP 5.24%



STRAIGHT IN APPROACH	MISSED APPROACH GRADIENT 2.5%			
	A	B	C	D
ILS CAT. I	533(200)	533(200)	613(280)	not applicable
ILS CAT. II	433(100)	443(110)	533(200)	not applicable
LLZ+DME	750(420)			
CIRCLING (1)	MISSED APPROACH GRADIENT 5.0%			
	A	B	C	D
	890 (534)	950 (594)	1110 (754)	2000(1644)

CIRCLING SECTOR	GS	FT PER MIN	IBS DME	ALTITUDE (HEIGHT)	MSA BSA 25 NM
	180	956	D5.5	2100 (1770)	
	150	797	D4	1620 (1290)	
	130	690	D3	1300 (960)	
	110	584	D2	970 (640)	
	90	478	D1	650 (320)	
	70	372	D1	650 (320)	

ICAO - INSTRUMENT APPROACH CHART

(*) **WARNING:** In case of ATC necessities perform climbing with MNM climb gradient 250 FT/NM (4.4%) to cross point R 094/13 NM BSA at 5000 FT or above.

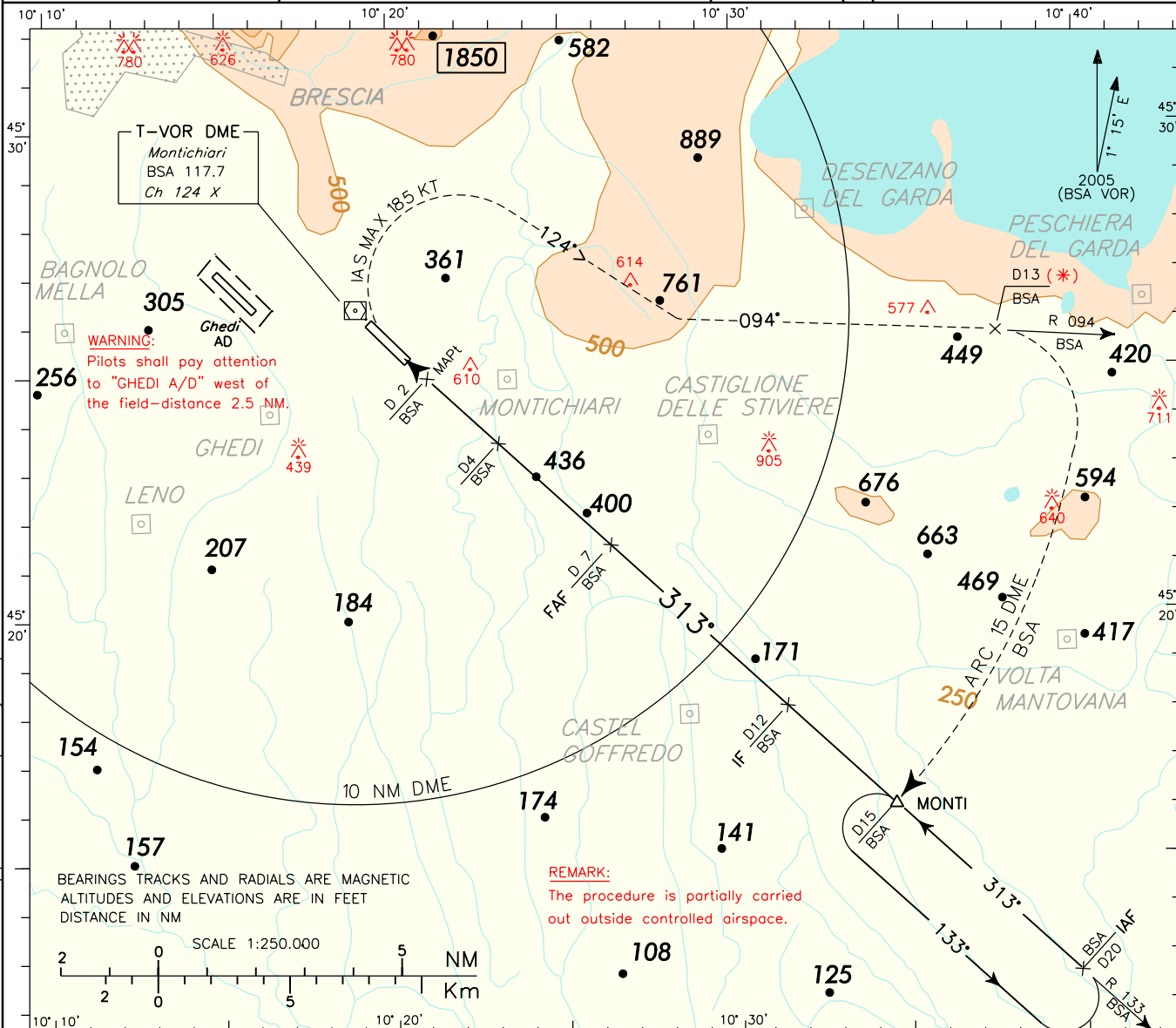
APP	Garda Approach	TWR	Montichiari Tower
	135.90 124.25		119.40
	118.55		

AD ELEV	356
---------	-----

BRESCIA/MONTICHIARI
(ATC DISCRETION)
VOR+DME-P RWY 32

DOC.8168-ED.3-1986

CHANGE: New approach frequency implemented

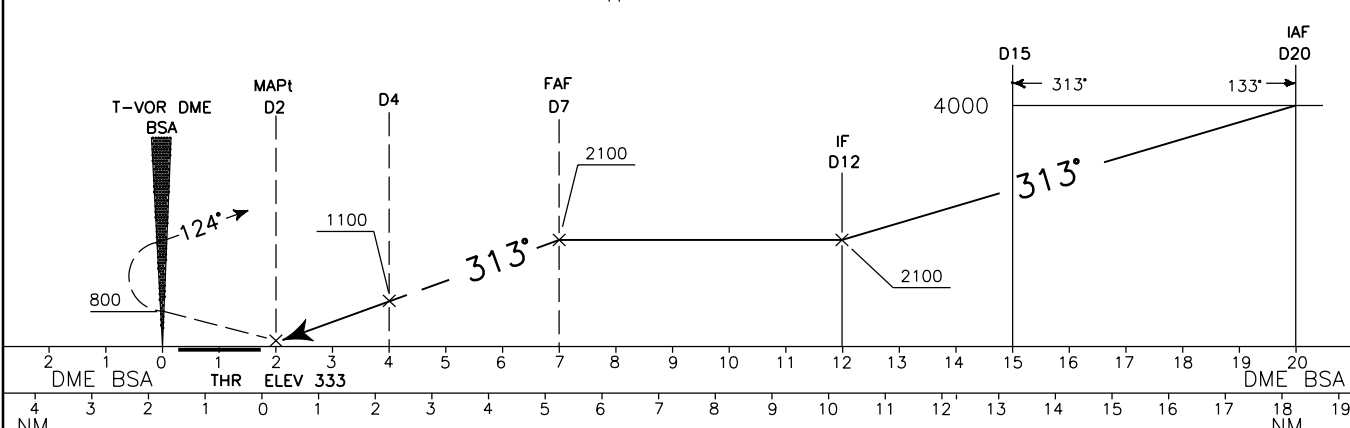


BEARINGS TRACKS AND RADIALS ARE MAGNETIC
ALTITUDES AND ELEVATIONS ARE IN FEET
DISTANCE IN NM

SCALE 1:250.000

REMARK:
The procedure is partially carried out outside controlled airspace.

TRANSITION ALT 6000 MISSED APPROACH: Proceed on track 313° climbing to 4000 Ft. At 800 Ft turn right on track 124° to join RDL 094 BSA VOR. At 13 DME BSA turn right to follow 15 DME BSA arc to MONTI holding pattern. Execute missed approach turns at IAS max 185 KT.



OCA (OCH)	A	B	C	D	CIRCLING SECTOR	FT PER MIN	GS	MSA BSA 25 NM
	750 (420)						728 160	
STRAIGHT IN APPROACH							637 140	
						546 120		
						455 100		
CIRCLING	890 (534)	950 (594)	1110 (754)	2000(1644)		364 80		